

HOW TO BUILD YOUR OWN BAIT PEN FOR UNDER \$25

by Anthony Albello aalbelo@groveslam.com

Revised: Jan 2003

BAIT PEN SPECS

Diameter:	2'10"	34"
Height:	3'	36"
Volume (ft)	19.27 cubic ft	
Volume (gal)	123 gallons	

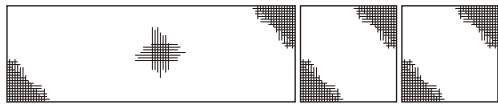
BILL OF MATERIALS

1x 1/2" Hard Mesh Roll (3'x15')	2x 3/8" 90° Elbows
2x Pool Noodles	4x 3/8" End Splices
4x 3/8" Flex Conduit (8'each)	1x Silicone Glue
2x 3/8" T-Fittings	30x Tie Wraps

1

CUT ALL PIECES

Unroll mesh and cut into 1 - 9' section and 2 - 3' sections



Cut tubing into 4 - 4'6" sections, 2 - 3'1" sections, and 3 - 1' sections

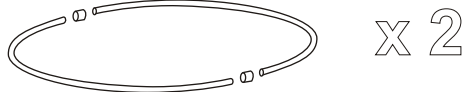


2

MAKE TOP AND BOTTOM RINGS

Take 2 - 4'6" sections of tube and join together using 2 ends splices. Glue with silicone and let dry.

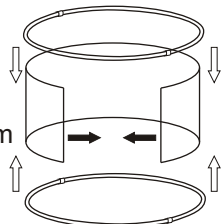
Make 2 rings. (Some may choose to reinforce the pen by adding two vertical tubes. To do this, use T instead of the end splices and add tube to length needed.)



3

MAKE BASE CYLINDER

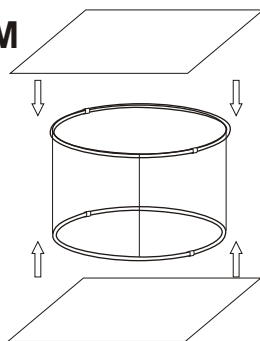
Take the ends of the 9' mesh section and join together with the rings forming a cylinder. Make sure to keep the mesh tight around the rings to avoid warps. It may be helpful to do the bottom ring first. Use tie-wraps to secure.



4

ADD TOP & BOTTOM

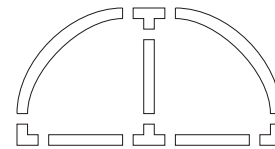
Add the top and bottom sections to the pen. Secure with tie-wraps THEN trim off excess mesh.



5

ASSEMBLE DOOR

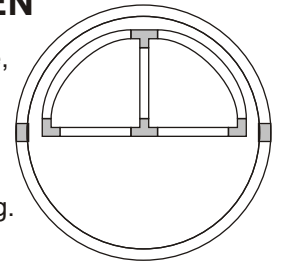
Use the 2 - 3'1" sections and 3 - 1' sections and assemble as shown. Silicone all the joints and let dry.



6

ADD DOOR TO PEN

Using the door as a template, place on top of pen and cut-out the opening for the door. Make sure that the opening is SMALLER than the door, otherwise the door will fall through the opening. Use cut-out section to cover door. Secure door LOOSELY with tie-wraps.

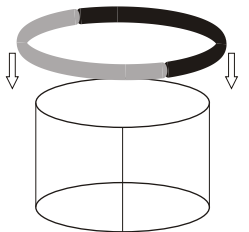


(top view)

7

ADD RINGS AND NOODLES TO BASE

Cut Noodles to size. Secure everything with tie-wraps. (I prefer to tie the noodles to the OUTSIDE of the top ring keeping the top just above.)



F

FINISHED!!

These instructions were created keeping the budget under \$25. They were all purchased at a local home store such as Home Depot (Mesh SKU#504304) Larger pens can be created using additional materials. If you want help in calculating the volume of your own custom pen, drop me an e-mail.

Feel free to e-mail me with feedback.